

# LOGAN COUNTY DIGITAL EQUITY FACT SHEET

## WHAT IS DIGITAL EQUITY?

Digital equity ensures that all individuals and communities, regardless of location or socioeconomic status, have access to affordable, reliable internet, as well as the skills necessary to fully participate in today's digital society.

### Households without Device:



### Households without Broadband:



## Covered Population Demographics

There are **32,350** Residents in LOGAN COUNTY



**39.1%**

Households with incomes at or below the national poverty level.

**21.6%**

of the population are aging individuals (65+)



**29.2%**

of the population are individuals living with a disability

**5%**

of the population are veterans



## Why Digital Equity Matters in Logan County



### Education:

- Broadband access helps students participate in online learning, complete assignments, and develop digital skills.



### Healthcare:

- Telemedicine access can be crucial for rural areas, providing healthcare without the need for extensive travel.



### Workforce Development:

- High-speed internet fosters job opportunities, skills training, and remote work potential in rural communities.

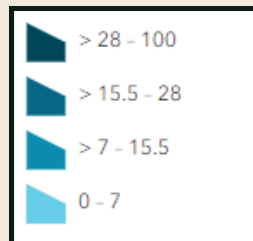


### Civic Engagement:

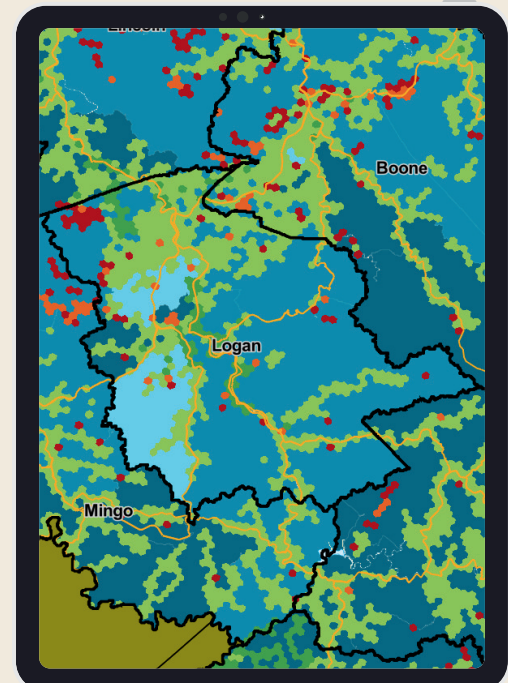
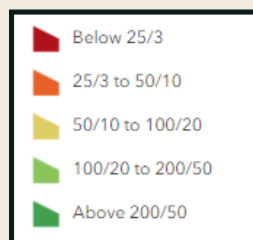
- Broadband helps residents participate in democracy, access public services, and stay informed.

## Broadband Coverage in LOGAN COUNTY

% of no broadband subscription



Claimed Speeds



Digital equity plans were completed by Generation WV on behalf of Logan County in Fall 2024. GWV hosted community workshop and planning meetings. This factsheet highlights key points from those plans.

# PROBLEMS AND SOLUTIONS TABLE

PROBLEM	SOLUTION
<b>Affordability challenges</b>	<b>Affordability:</b> Affordability programming for low income residents; Affordability programs for devices and in-home help for individuals with disabilities.
<b>Lack of digital skills training and education support</b>	<p><b>Local support:</b> In home help and tech assistance for aging residents.</p> <p><b>Digital literacy training:</b> Training programs for parents and grandparents to understand how to keep children safe online, Training and educational programming for all residents.</p> <p><b>Cybersecurity:</b> Cybersecurity and Online safety training for Veterans and other populations reticent to use online resources like banking.</p>
<b>Access to devices</b>	<b>Device access:</b> Device access programs for aging residents: Including learning and tech support.

**What would broadband access mean for Logan County?**



## Logan County Next Steps

- Invite key community leaders and organizations to boost participation.
- Create a strategy to connect with underrepresented communities.
- Apply for grants to support digital equity initiatives.
- Set a timeline and framework for ongoing stakeholder input.

### Digital Equity Plan:

The full Digital Equity Plan for Logan County can be found at

<http://generationwv.org/broadband>

SCAN ME

