

WYOMING COUNTY DIGITAL EQUITY FACT SHEET

WHAT IS DIGITAL EQUITY?

Digital equity ensures that all individuals and communities, regardless of location or socioeconomic status, have access to affordable, reliable internet, as well as the skills necessary to fully participate in today's digital society.

Households without Device:

WEST VIRGINIA 11.2%

WYOMING COUNTY 20.8%

Households without Broadband:

WEST VIRGINIA 17.3%

WYOMING COUNTY 25.8%

Covered Population Demographics

There are **21,237** Residents in
WYOMING COUNTY



36.43%

Households with incomes at or below the national poverty level.

22.55%

of the population are aging individuals (65+)



33.6%

of the population are individuals living with a disability

7.8%

of the population have low literacy rates



Why Digital Equity Matters in Wyoming County



Education:

- Broadband access helps students participate in online learning, complete assignments, and develop digital skills.



Healthcare:

- Telemedicine access can be crucial for rural areas, providing healthcare without the need for extensive travel.



Workforce Development:

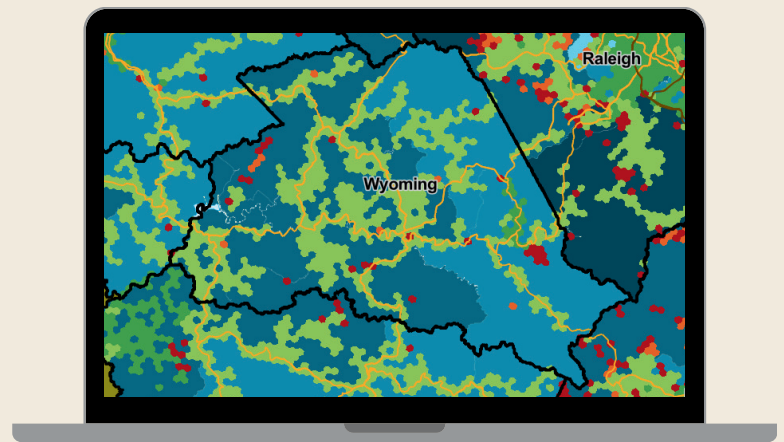
- High-speed internet fosters job opportunities, skills training, and remote work potential in rural communities.



Civic Engagement:

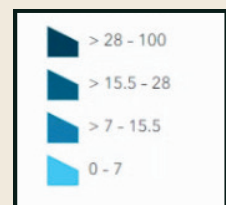
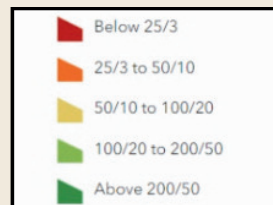
- Broadband helps residents participate in democracy, access public services, and stay informed.

Broadband Coverage in WYOMING COUNTY



Claimed Speeds

% of no broadband subscription



Digital equity plans were completed by Generation WV on behalf of Wyoming County in Fall 2024. GWV hosted community workshop and planning meetings. This factsheet highlights key points from those plans.

PROBLEMS AND SOLUTIONS TABLE

PROBLEM	SOLUTION
Affordability of devices/technology, and services.	Affordability measures: Assistance provided by state or government resources; Financial Assistance for low income people to access broadband services
Lack of education on technology, lack of access to training about using digital resources/tools.	Digital skills training: Local classes for computer and internet training, local support for residents.
Lack of resources for those with disability	Identify partners to work on programming to address unique needs including training and assistive device access.
Lack of transportation	Identify transportation partners & tailor resources around existing transportation options.

What would broadband access mean for Wyoming County:



Wyoming County Next Steps

- Invite key community leaders and organizations to boost participation.
- Create a strategy to connect with underrepresented communities.
- Apply for grants to support digital equity initiatives.
- Set a timeline and framework for ongoing stakeholder input.

Digital Equity Plan:

The full Digital Equity Plan for Wyoming County can be found at <http://generationwv.org/broadband>

